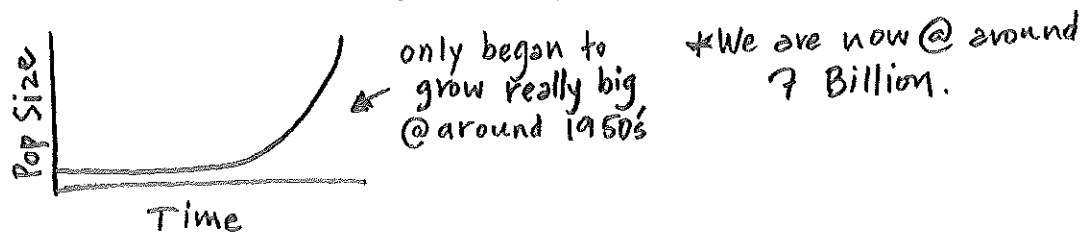


Demographics - study of pop. change

Human Population Notes #1

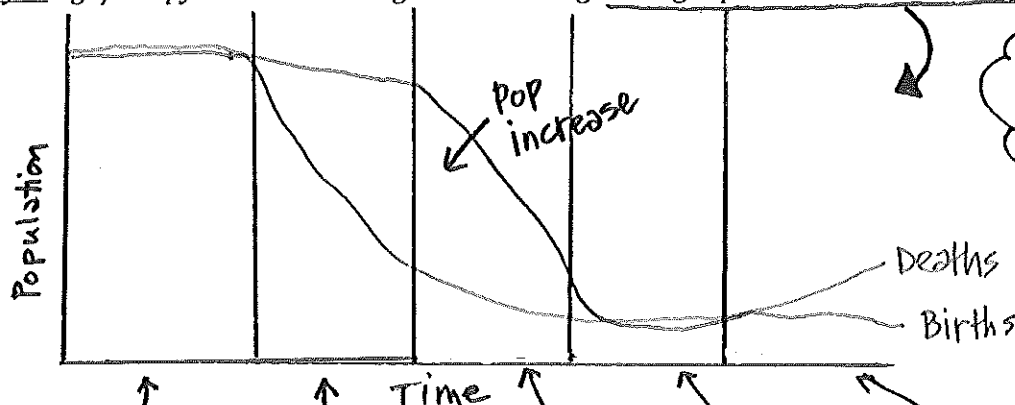
3.1.1 Describe the nature and explain the implications of exponential growth in human populations.



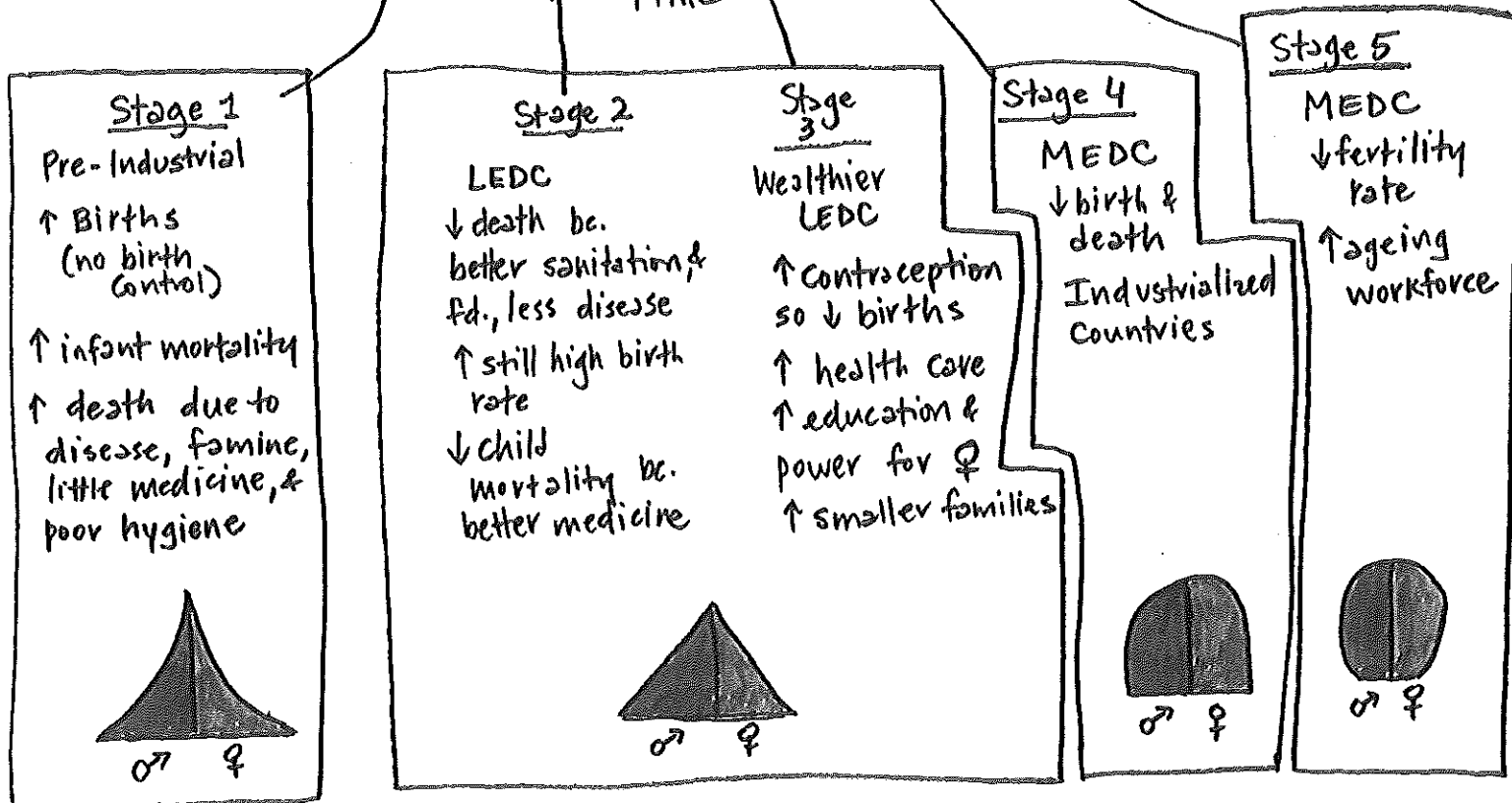
↑ People = ↑ resources needed + ↑ Waste + ↑ Contamination + ↑ Urban & Suburban Spreading

Why Increase? • ↑ food/nutrition • ↑ Medical/public health • ↑ sanitation & personal hygiene • ↑ safe water supplies

3.1.3 Analyze age/sex pyramids and diagrams showing demographic transition models.



* See 2nd page for MEDC & LEDC



3.1.4 Discuss the use of models in predicting the growth of human populations.

Limitations to these Models →

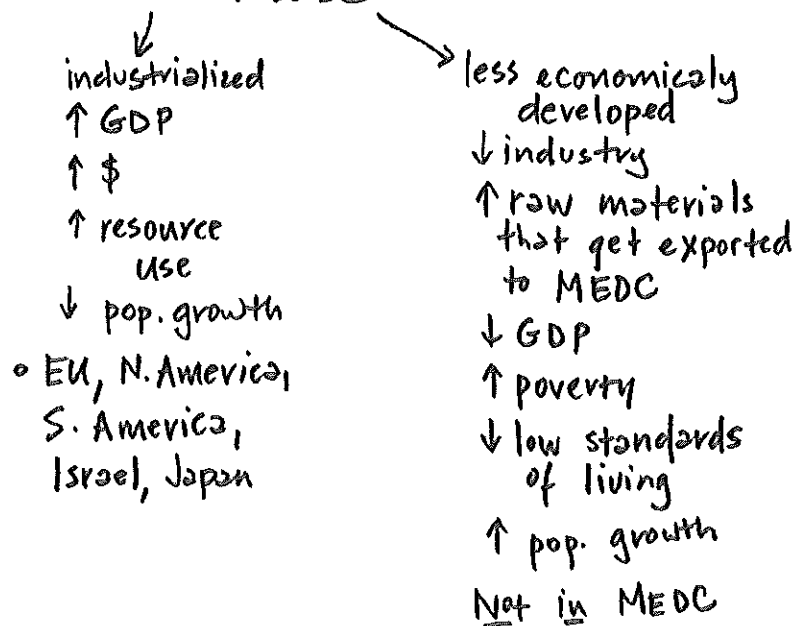
- 5th stage was just added bc. now countries are decreasing in size.
- Other issues impact pop loss → AIDS, immigration
- ↓ birth rates are assumed to be due to ↑ education & contraception. Not always the case.
- Eurocentric Model → doesn't explain super fast Tiger Economies of Asia. Such as Malaysia, Singapore, & Hong Kong
- Assumes that all countries will become industrialized

* How are Human Pops Measured?

↳ Human Development Index (HDI) ranks countries.

life expectancy
standards of living
education
gross domestic product (GDP)

↳ MEDC & LEDC



↳ Some other Descriptors

NICs - newly industrialized countries
increased GDP

↑ foreign \$

↑ migration to cities

China, India, South Africa, Malaysia, Thailand, Philippines, Turkey, Mexico, Brazil